

01 ACM PANEL JOINT DETAIL OVER CMU WALL

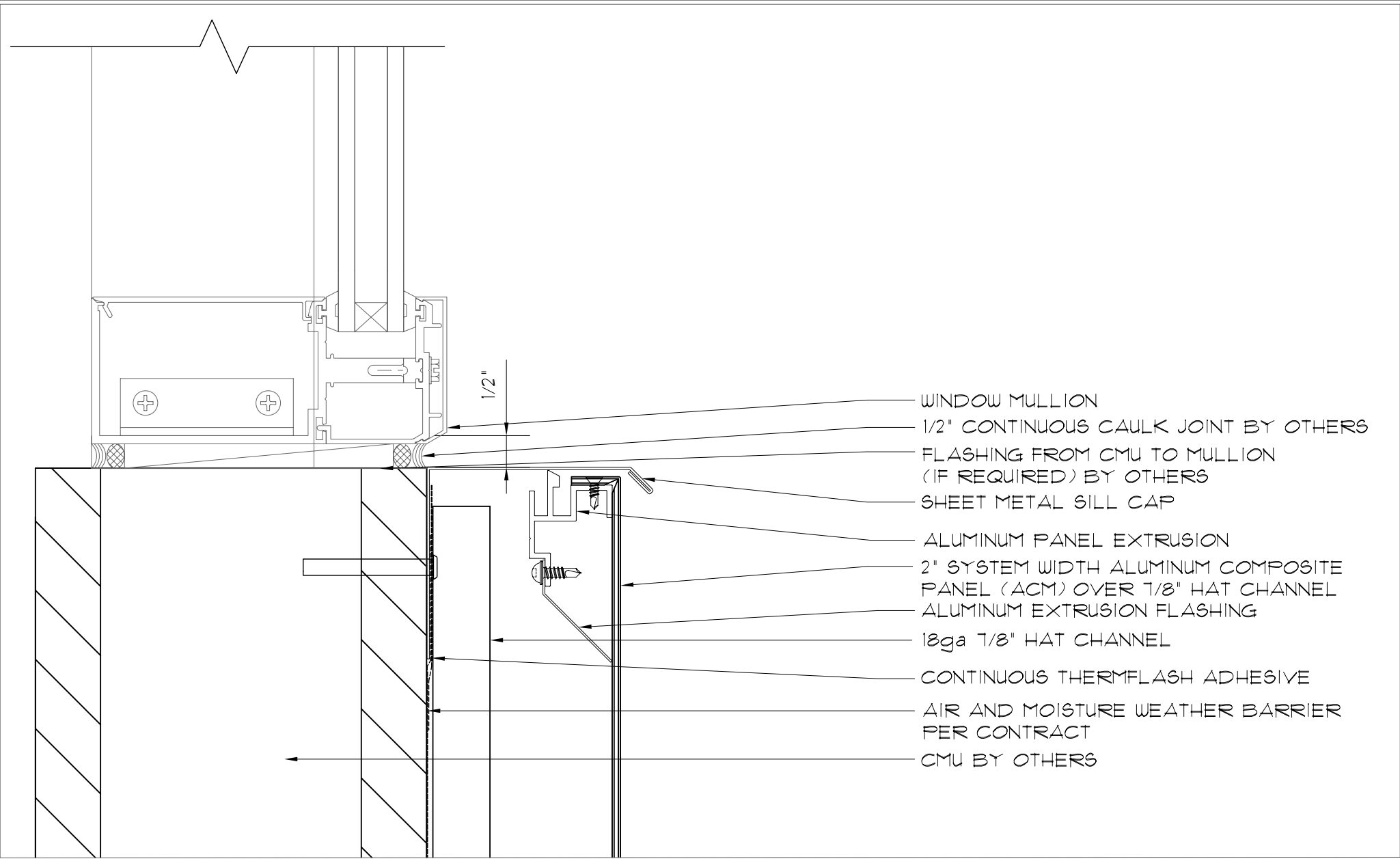
PANELWALL2300 SERIES

IF YOU ARE INTERESTED IN USING THESE DETAILS IN YOUR DESIGN SHEETS, PLEASE CONTACT BESTWORTH-ROMMEL FOR ADDITIONAL DETAILS, CADD DWGS, OR FURTHER INFORMATION REGARDING OUR PANEL SYSTEMS



BESTWORTH-ROMMEL, INC.
19818 14TH Ave. N.E.
Arlington, WA 98223

360.435.2927
www.bestworth.com



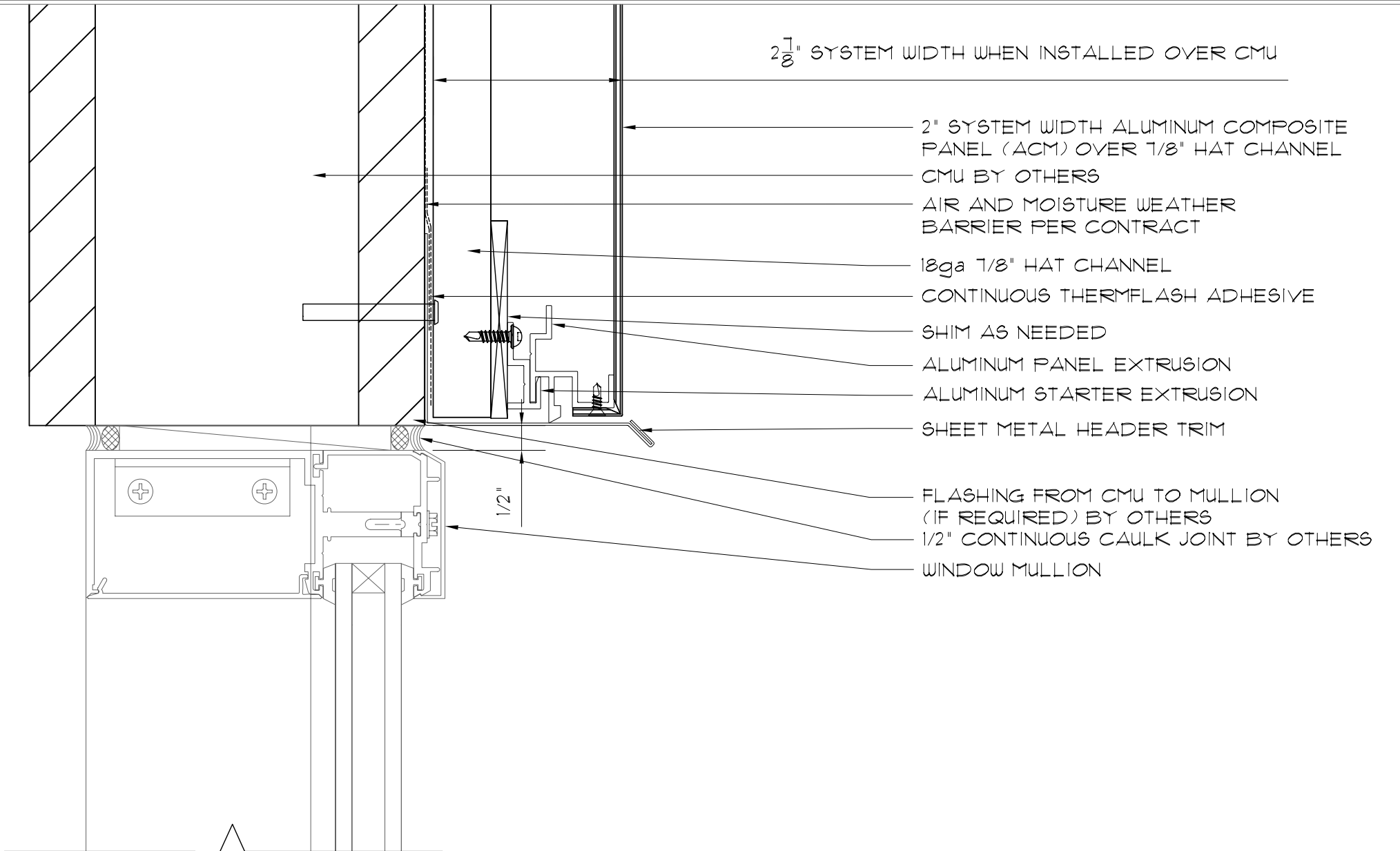
Ø2 ACM PANEL OVER CMU WALL @ WINDOW SILL DETAIL

PANELWALL2300 SERIES

IF YOU ARE INTERESTED IN USING THESE DETAILS IN YOUR DESIGN SHEETS, PLEASE CONTACT BESTWORTH-ROMMEL FOR ADDITIONAL DETAILS, CADD DWGS, OR FURTHER INFORMATION REGARDING OUR PANEL SYSTEMS



BESTWORTH-ROMMEL, INC.
 19818 14TH Ave. N.E.
 Arlington, WA 98223
 360.435.2927
 www.bestworth.com



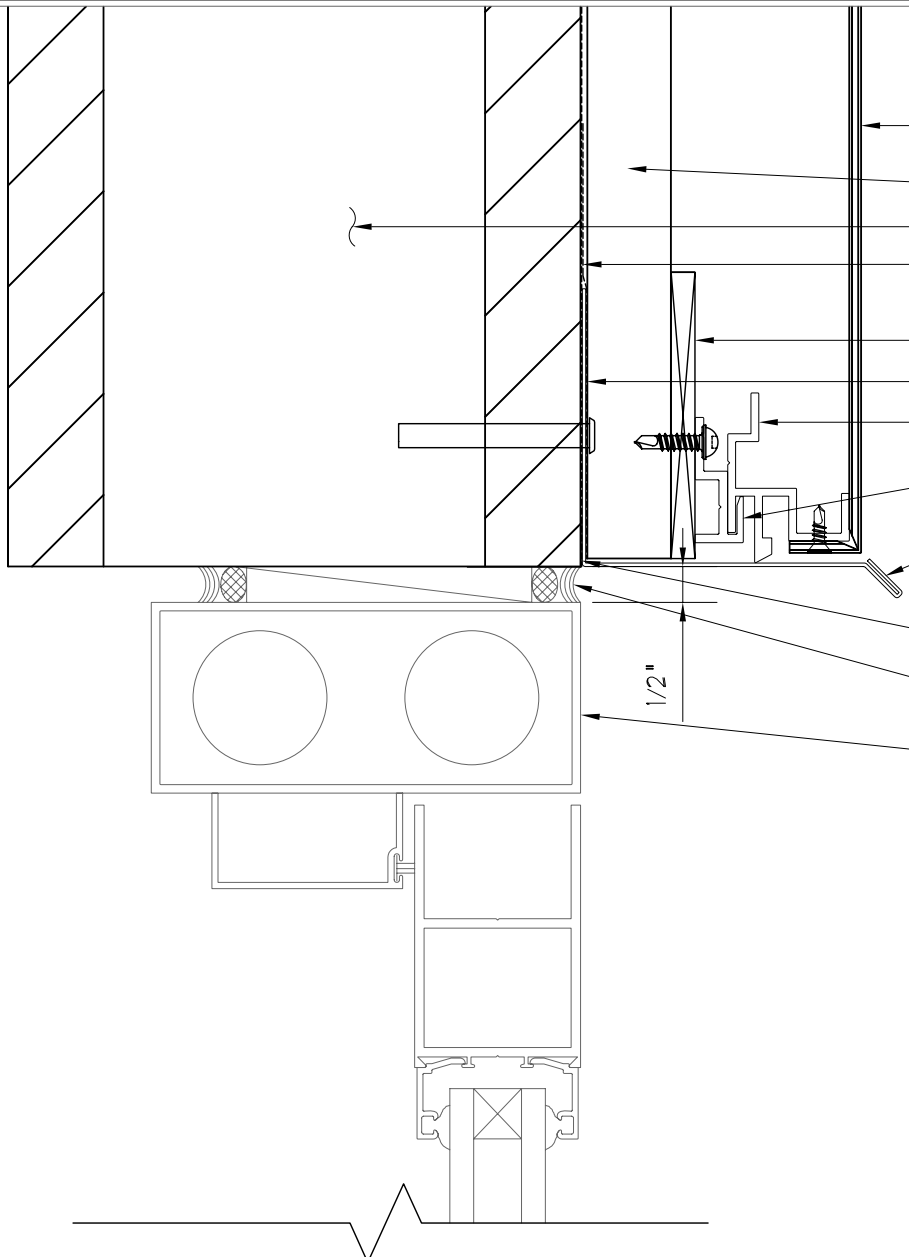
Ø3 ACM PANEL OVER CMU WALL @ WINDOW HEADER DETAIL

PANELWALL2300 SERIES

IF YOU ARE INTERESTED IN USING THESE DETAILS IN YOUR DESIGN SHEETS, PLEASE CONTACT BESTWORTH-ROMMEL FOR ADDITIONAL DETAILS, CADD DWGS, OR FURTHER INFORMATION REGARDING OUR PANEL SYSTEMS



BESTWORTH-ROMMEL, INC.
 19818 14TH Ave. N.E.
 Arlington, WA 98223
 360.435.2927
 www.bestworth.com



- 2" SYSTEM WIDTH ALUMINUM COMPOSITE PANEL (ACM) OVER 1/8" HAT CHANNEL
- 18ga 1/8" HAT CHANNEL
- CMU BY OTHERS
- AIR AND MOISTURE WEATHER BARRIER PER CONTRACT
- SHIM AS NEEDED
- CONTINUOUS THERMFLASH ADHESIVE
- ALUMINUM PANEL EXTRUSION
- ALUMINUM STARTER EXTRUSION
- SHEET METAL HEADER TRIM
- FLASHING FROM FRAMING TO MULLION (IF REQUIRED) BY OTHERS
- 1/2" CONTINUOUS CAULK JOINT BY OTHERS
- WINDOW MULLION

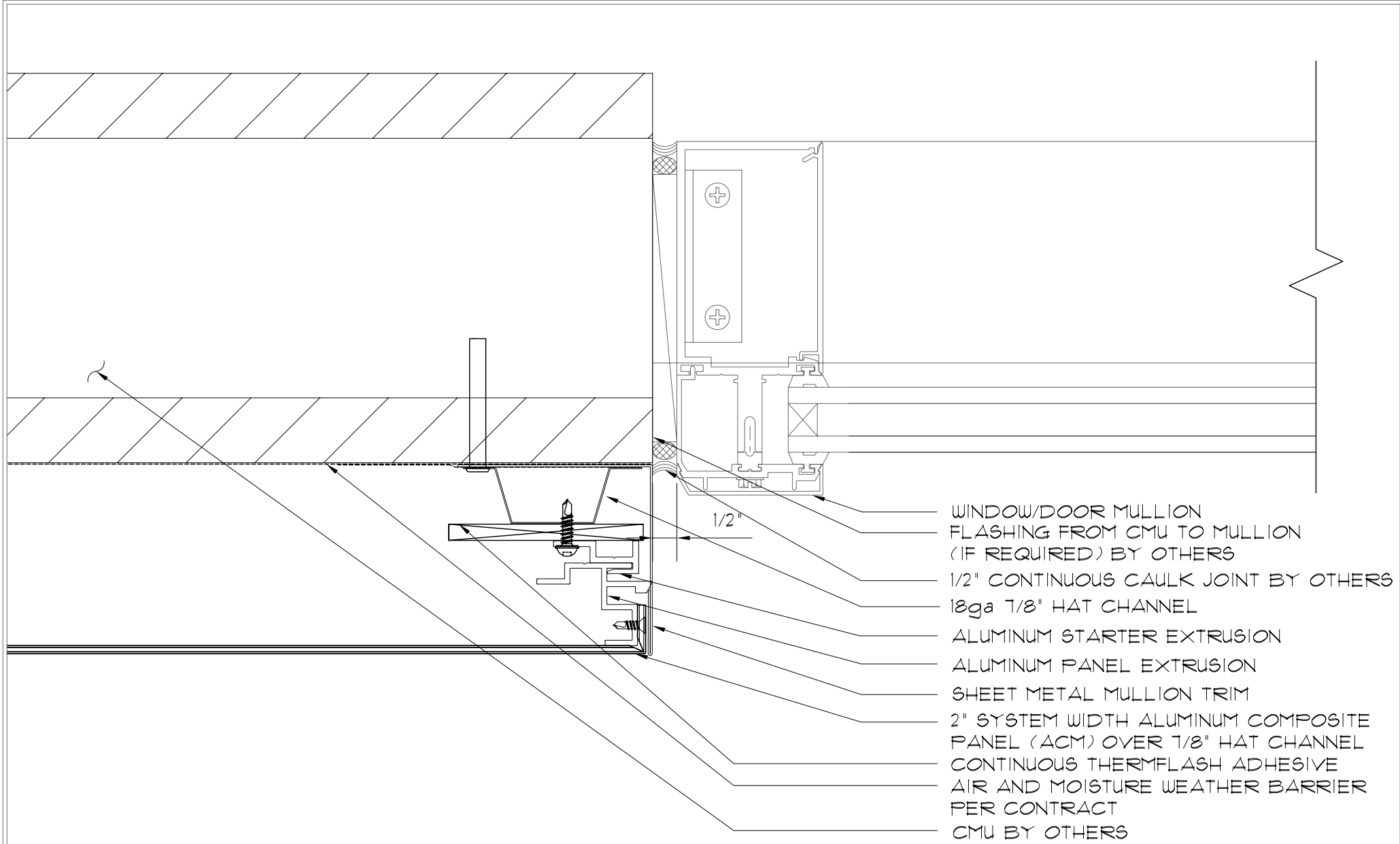
Ø4 ACM PANEL OVER CMU WALL @ DOOR HEADER DETAIL

PANELWALL2300 SERIES

IF YOU ARE INTERESTED IN USING THESE DETAILS IN YOUR DESIGN SHEETS, PLEASE CONTACT BESTWORTH-ROMMEL FOR ADDITIONAL DETAILS, CADD DWGS, OR FURTHER INFORMATION REGARDING OUR PANEL SYSTEMS



BESTWORTH-ROMMEL, INC.
 19818 14TH Ave. N.E.
 Arlington, WA 98223
 360.435.2927
 www.bestworth.com



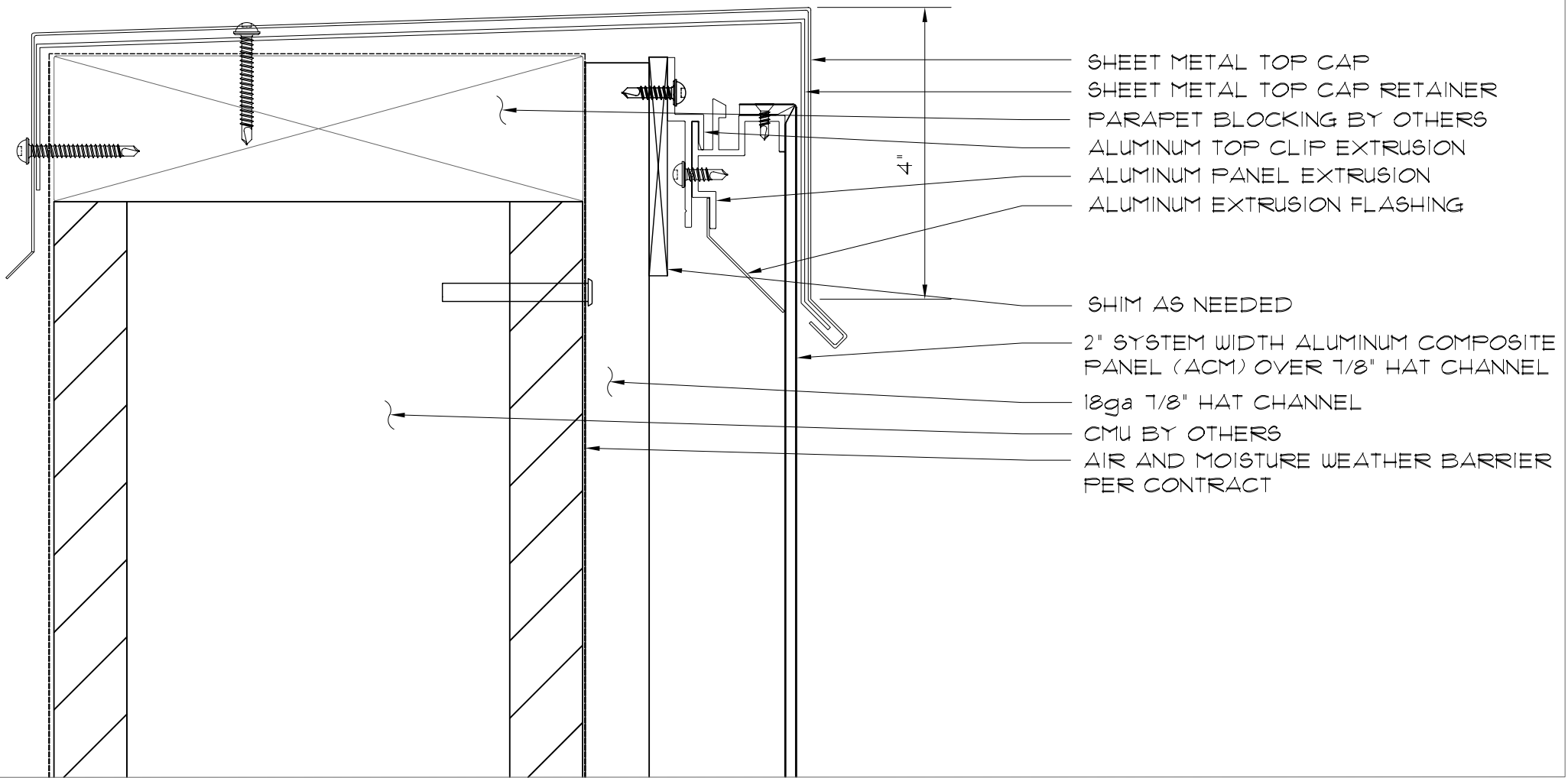
05
 ACM PANEL OVER CMU WALL @ DOOR/WINDOW JAMB DETAIL

PANELWALL2300 SERIES

IF YOU ARE INTERESTED IN USING THESE DETAILS IN YOUR DESIGN SHEETS,
 PLEASE CONTACT BESTWORTH-ROMMEL FOR ADDITIONAL DETAILS, CADD
 DWGS, OR FURTHER INFORMATION REGARDING OUR PANEL SYSTEMS



BESTWORTH-ROMMEL, INC.
 19818 14TH Ave. N.E.
 Arlington, WA 98223
 360.435.2927
 www.bestworth.com



06 TOP CAP OVER ACM PANEL OVER CMU WALL @ BUILDING
 WALL DETAIL

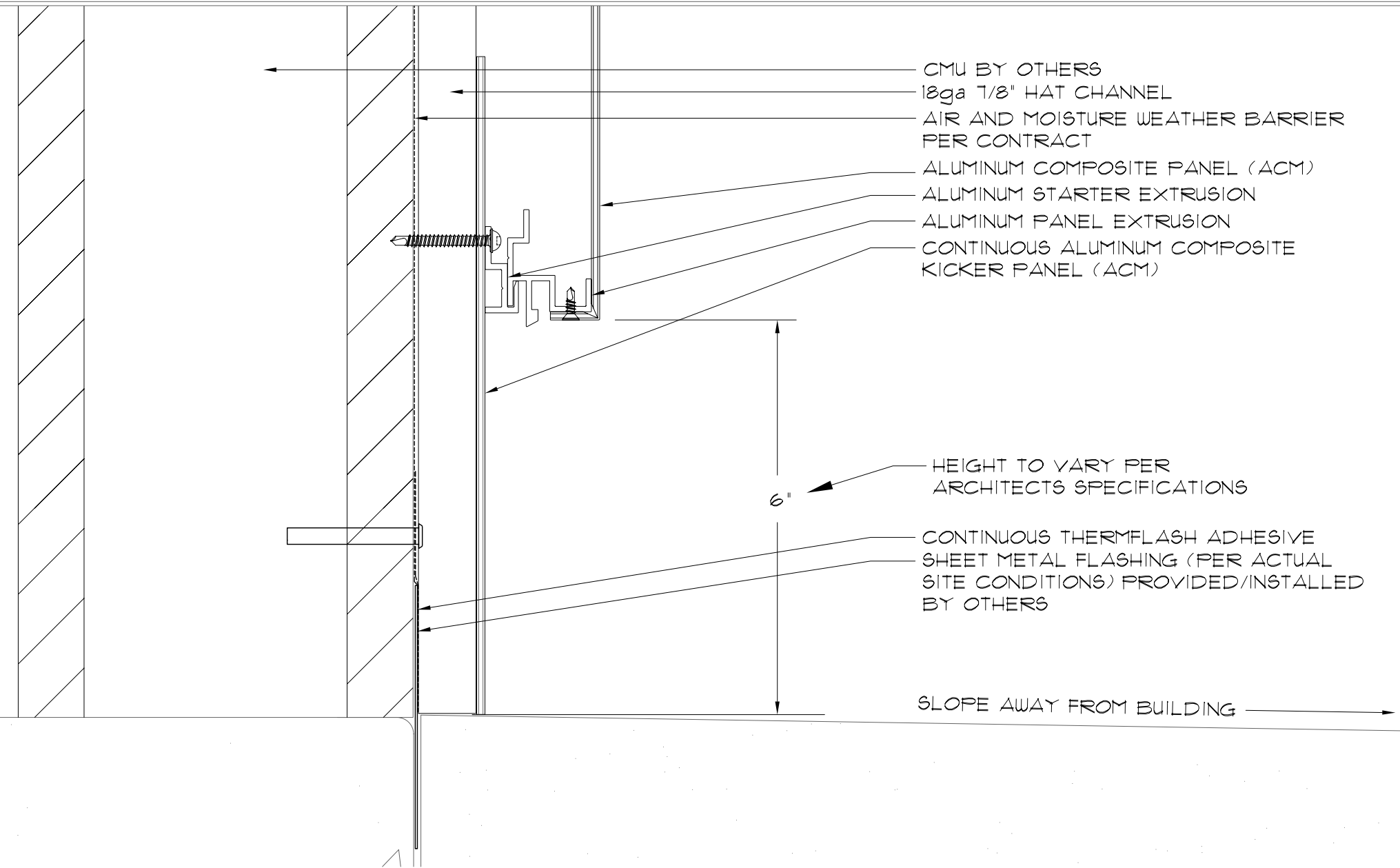
PANELWALL2300 SERIES

IF YOU ARE INTERESTED IN USING THESE DETAILS IN YOUR DESIGN SHEETS,
 PLEASE CONTACT BESTWORTH-ROMMEL FOR ADDITIONAL DETAILS, CADD
 DWGS, OR FURTHER INFORMATION REGARDING OUR PANEL SYSTEMS



BESTWORTH-ROMMEL, INC.
 19818 14TH Ave. N.E.
 Arlington, WA 98223

360.435.2927
 www.bestworth.com



01 ACM PANEL OVER CMU WALL @ F.F. DETAIL

PANELWALL2300 SERIES

IF YOU ARE INTERESTED IN USING THESE DETAILS IN YOUR DESIGN SHEETS,
 PLEASE CONTACT BESTWORTH-ROMMEL FOR ADDITIONAL DETAILS, CADD
 DWGS, OR FURTHER INFORMATION REGARDING OUR PANEL SYSTEMS



BESTWORTH-ROMMEL, INC.
 19818 14TH Ave. N.E.
 Arlington, WA 98223
 360.435.2927
 www.bestworth.com